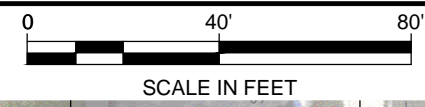


NO.	DATE	REVISION	STATE	PROJECT DESIGNATION	YEAR	SHEET NO.	TOTAL SHEETS
			ALASKA	0972018/Z680850000	2020	1	7



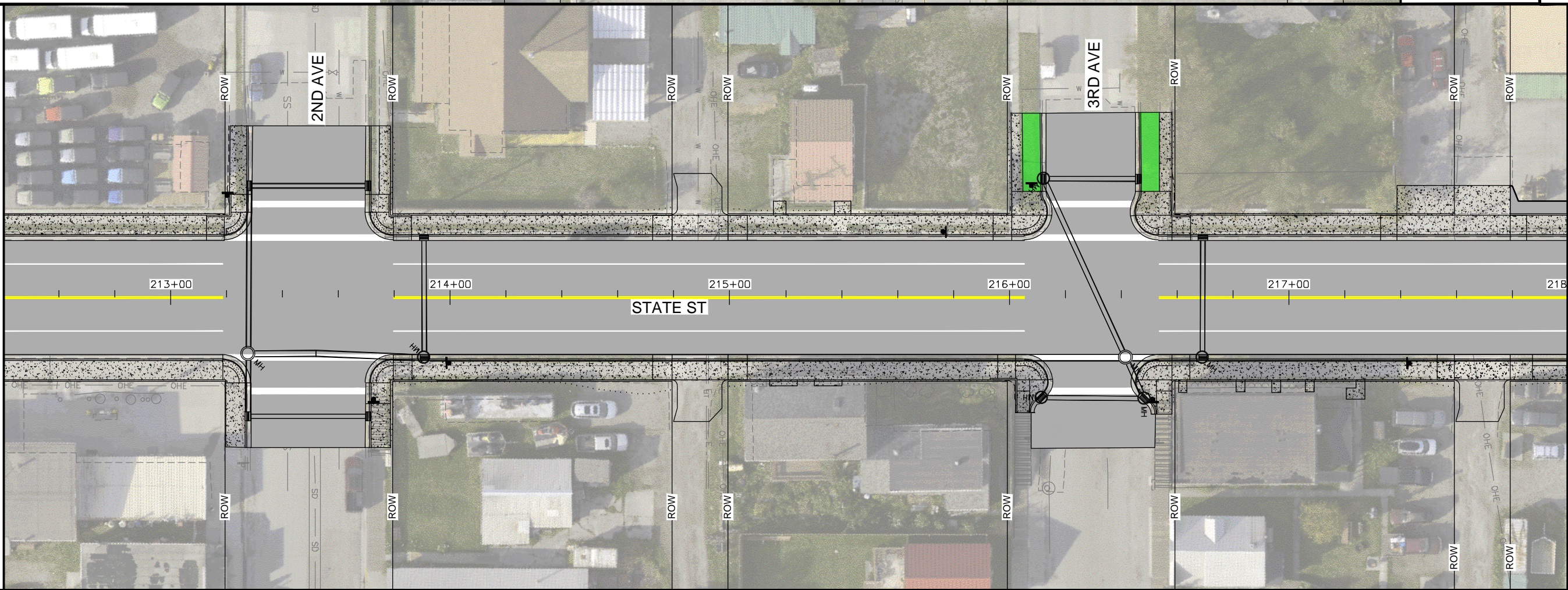
LEGEND

	ASPHALT
	CONCRETE
	GRASS BUFFER

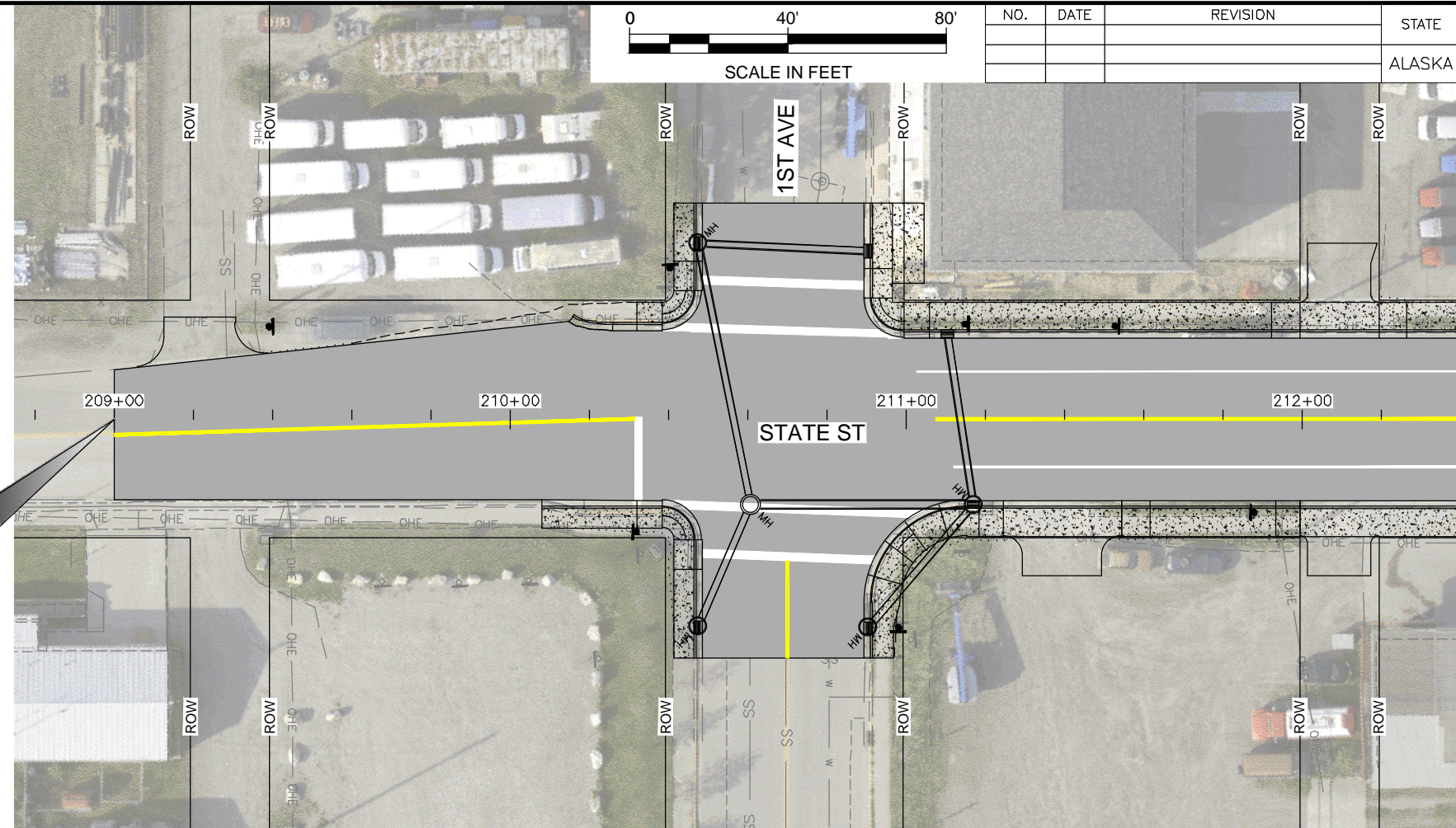
**DRAFT-
NOT FOR
CONSTRUCTION**

MATCH "S" 212+40 LINE

MATCH "S" 218+00 LINE



BEGINNING OF PROJECT
 "S" LINE, STA 209+00
 BEGIN STRIPING
 MATCH EXISTING

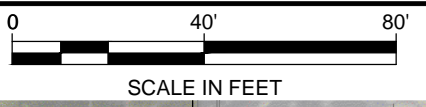
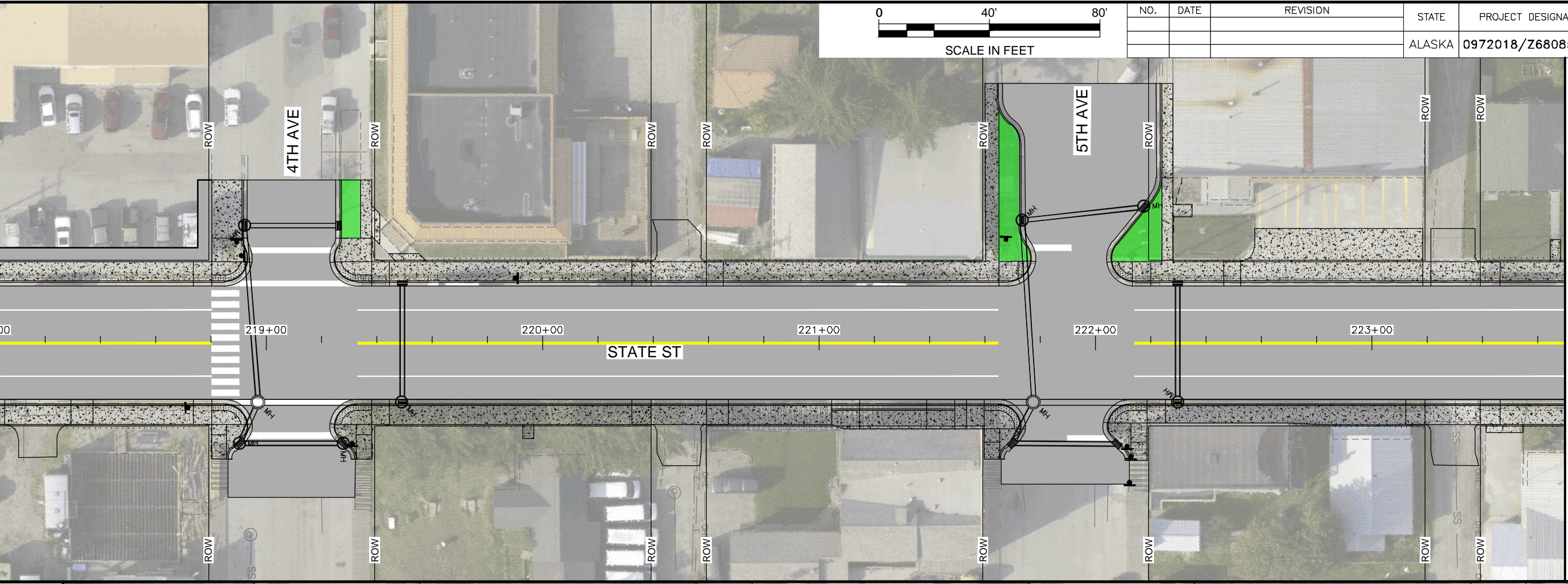


MATCH "S" 212+40 LINE

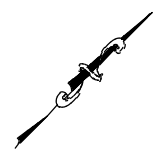
FIRM STATE OF ALASKA DEPARTMENT OF TRANSPORTATION & PUBLIC FACILITIES
 ADDRESS 8860 GLACIER HWY, JUNEAU, AK 99811
 PHONE (907) 465-1763
 CERTIFICATE OF AUTH #:

FILE Z:\project\2608_01 DOT_SE Skagway State Street Rehab\Civil\Involvement\Figures\6808\STATE\an-&Plate\20 LAYOUT H2
 DESIGNED JMH
 CHECKED JLD
 DRAFTED JMH

MATCH "S" 218+00 LINE
 MATCH "S" 223+70 LINE



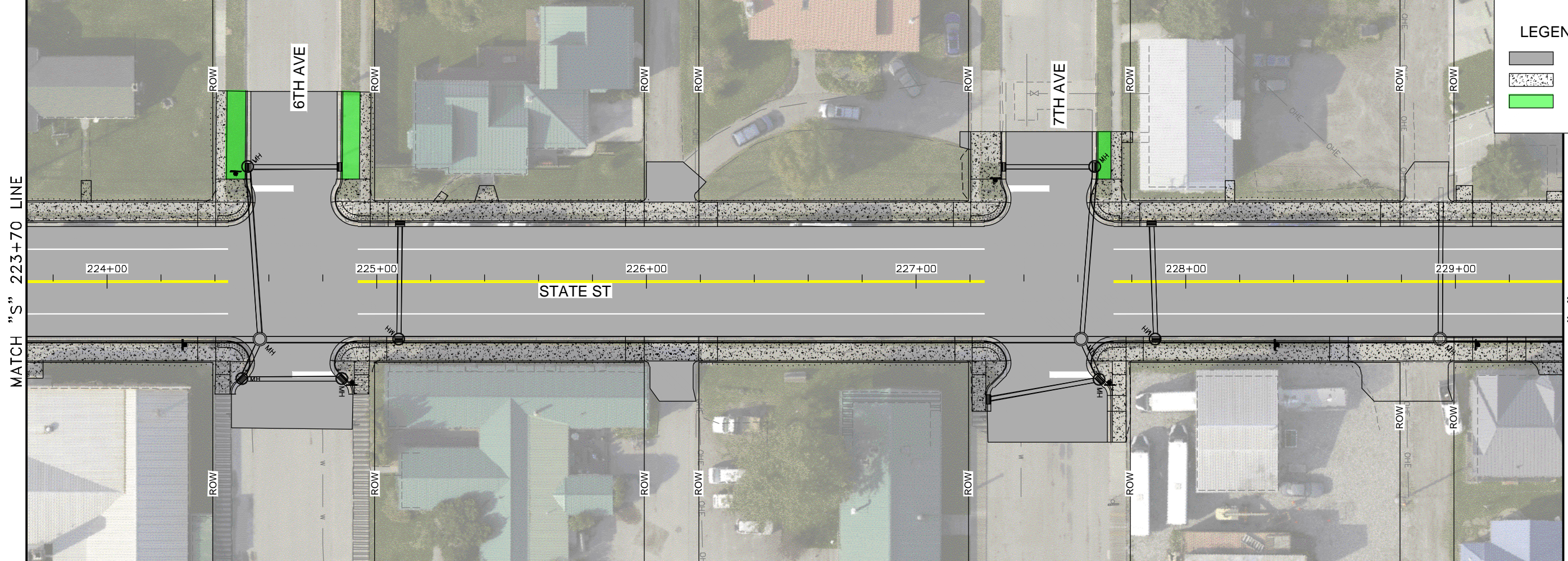
NO.	DATE	REVISION	STATE	PROJECT DESIGNATION	YEAR	SHEET NO.	TOTAL SHEETS
			ALASKA	0972018/Z680850000	2020	2	7



**DRAFT-
NOT FOR
CONSTRUCTION**

LEGEND

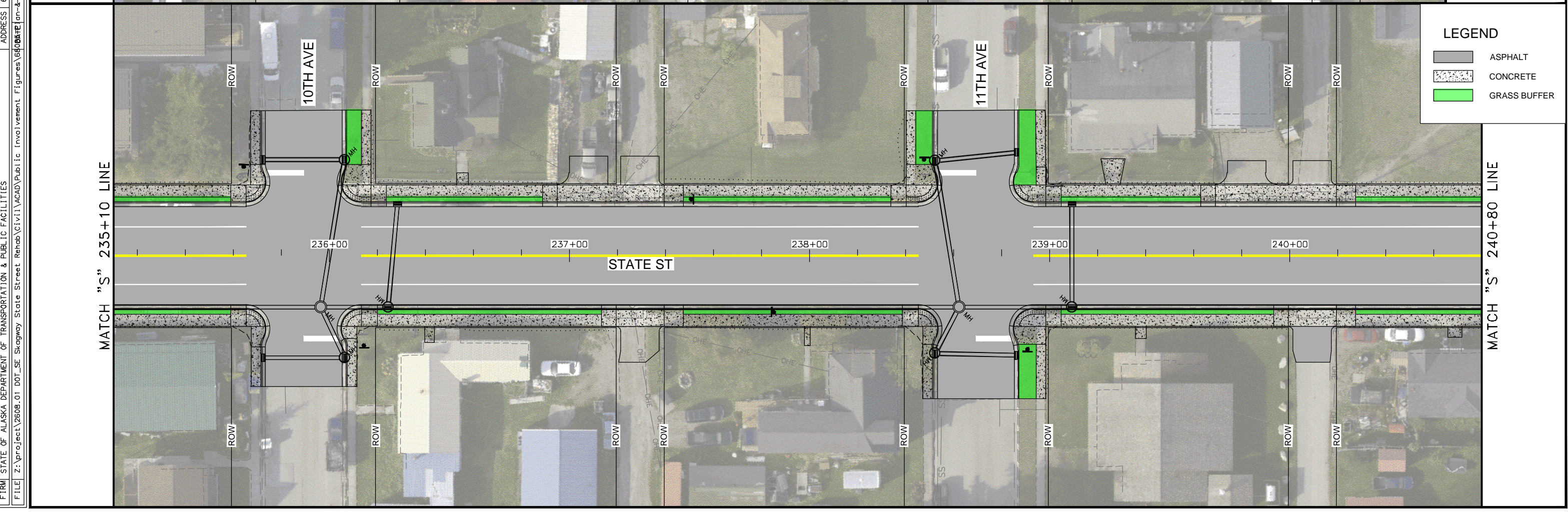
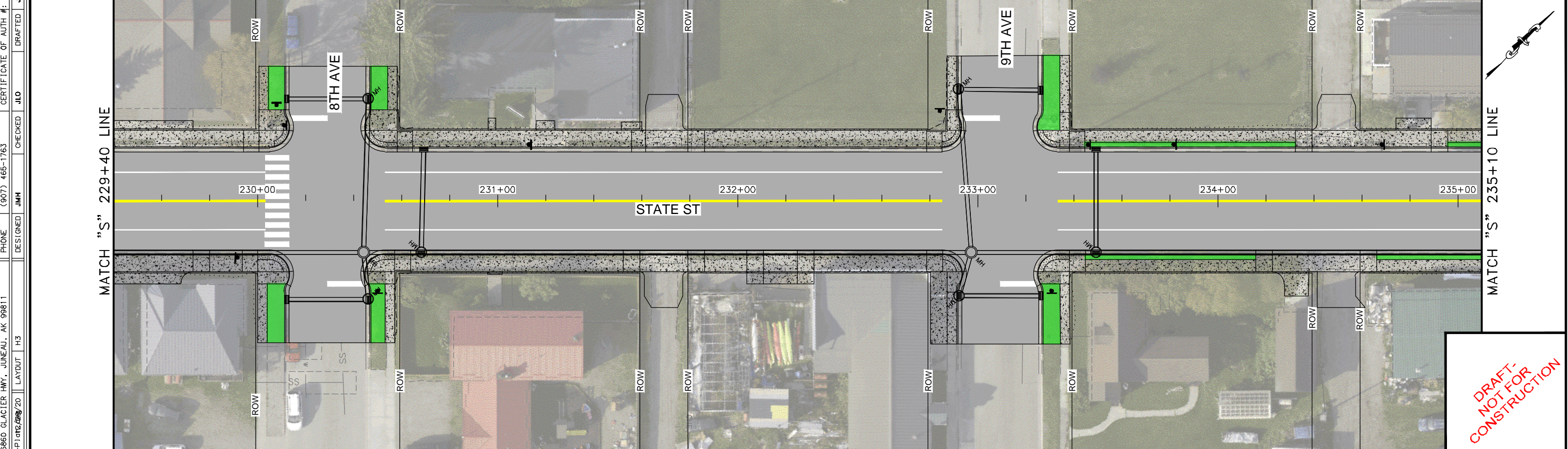
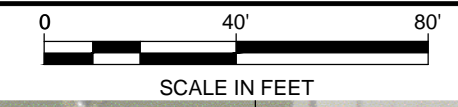
	ASPHALT
	CONCRETE
	GRASS BUFFER



MATCH "S" 223+70 LINE

MATCH "S" 229+40 LINE

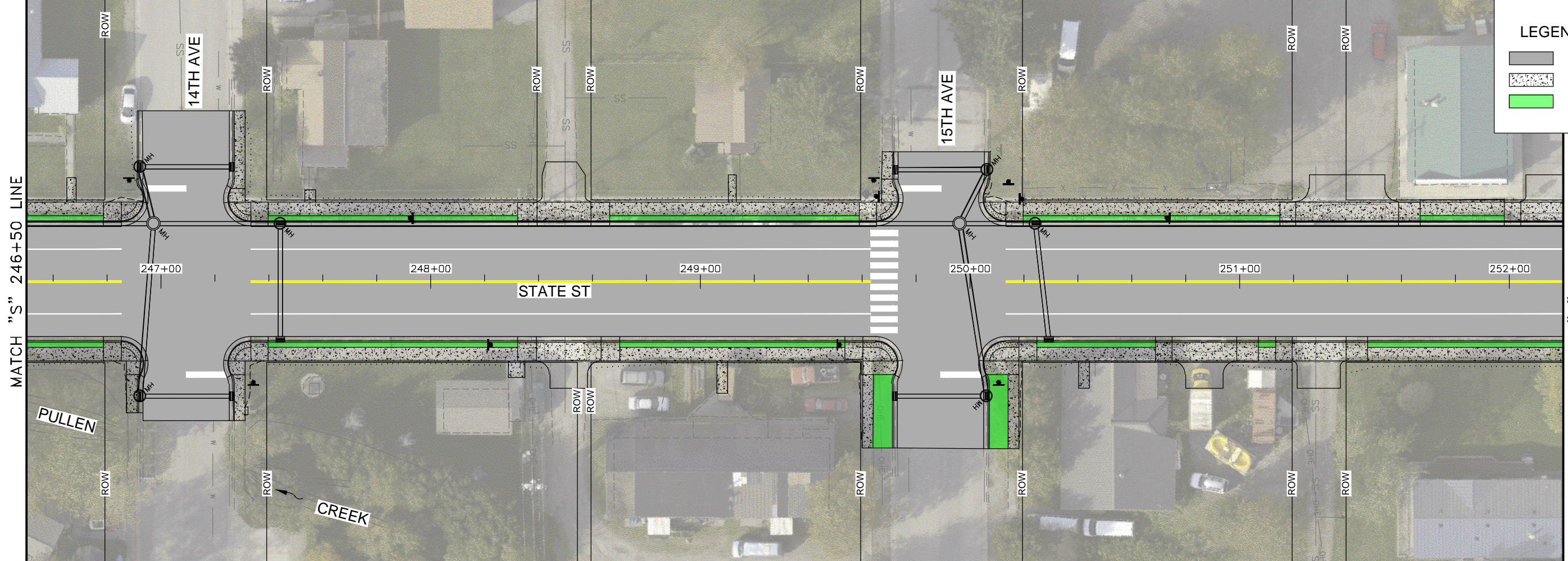
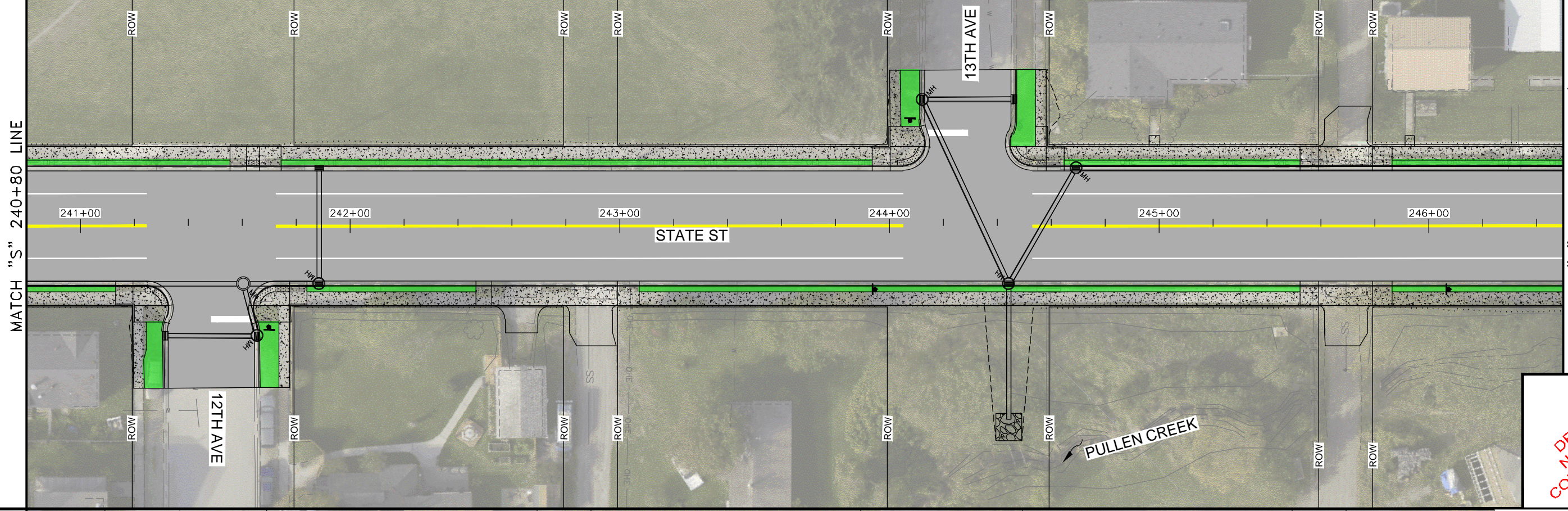
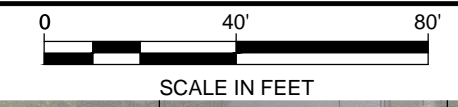
STATE OF ALASKA DEPARTMENT OF TRANSPORTATION & PUBLIC FACILITIES				PHONE	CERTIFICATE OF AUTH #:	
FIRM: STATE OF ALASKA DEPARTMENT OF TRANSPORTATION & PUBLIC FACILITIES				(907) 465-1763		
FILE: Z:\projects\2608.01 DOT SE Skagway State Street Rehab\Civil Involvement Figures\6809\STATE\an-&Plate\1820				DESIGNED	DRAFTED	
ADDRESS: 6860 GLACIER HWY, JUNEAU, AK 99811				CHECKED	JMH	
PROJECT: 0972018/Z680850000				JLD		
STATE				YEAR	SHEET NO.	TOTAL SHEETS
ALASKA				2020	3	7



**DRAFT-
NOT FOR
CONSTRUCTION**

LEGEND

- ASPHALT
- CONCRETE
- GRASS BUFFER



**DRAFT-
NOT FOR
CONSTRUCTION**

LEGEND

- ASPHALT
- CONCRETE
- GRASS BUFFER

FIRM: STATE OF ALASKA DEPARTMENT OF TRANSPORTATION & PUBLIC FACILITIES

ADDRESS: 8660 GLACIER HWY., JUNEAU, AK 99811

PHONE: (907) 465-1763

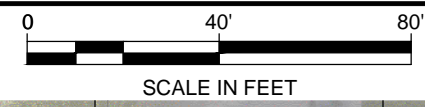
CERTIFICATE OF AUTH #:

FILE: Z:\project\2608_01 DOT_SE Skagway State Street Rehab\Civil Involvement Figures\8808\STATE\an-&Plate\2020\2020.LAYOUT H5

DESIGNED: JMH

CHECKED: JLD

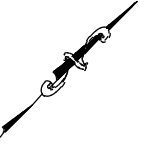
DRAFTED: JMH



SCALE IN FEET

NO.	DATE	REVISION

STATE	PROJECT DESIGNATION	YEAR	SHEET NO.	TOTAL SHEETS
ALASKA	0972018/Z680850000	2020	5	7



MATCH "S" 252+20 LINE

MATCH "S" 257+70 LINE

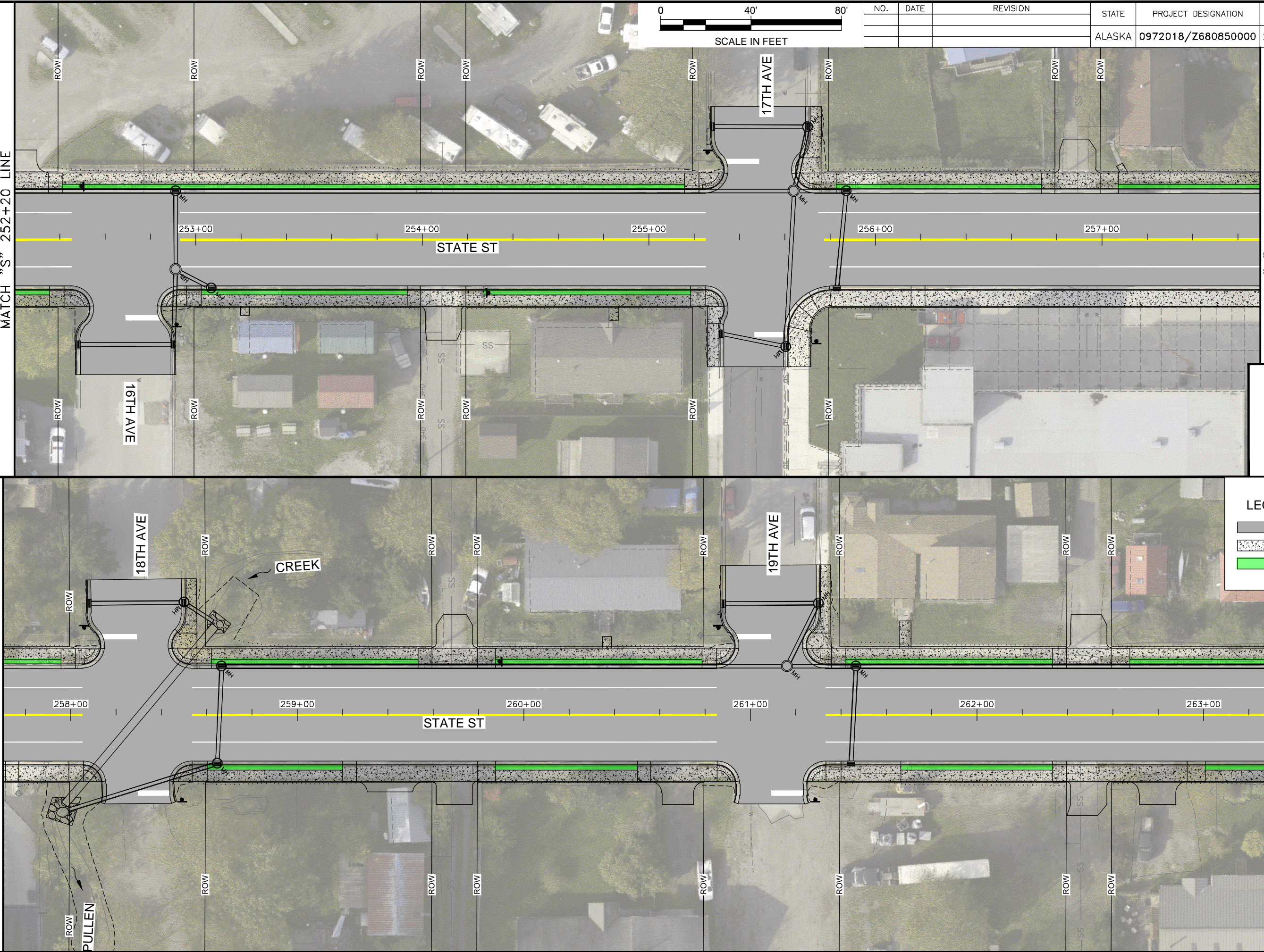
MATCH "S" 257+70 LINE

MATCH "S" 263+30 LINE

DRAFT-
NOT FOR
CONSTRUCTION

LEGEND

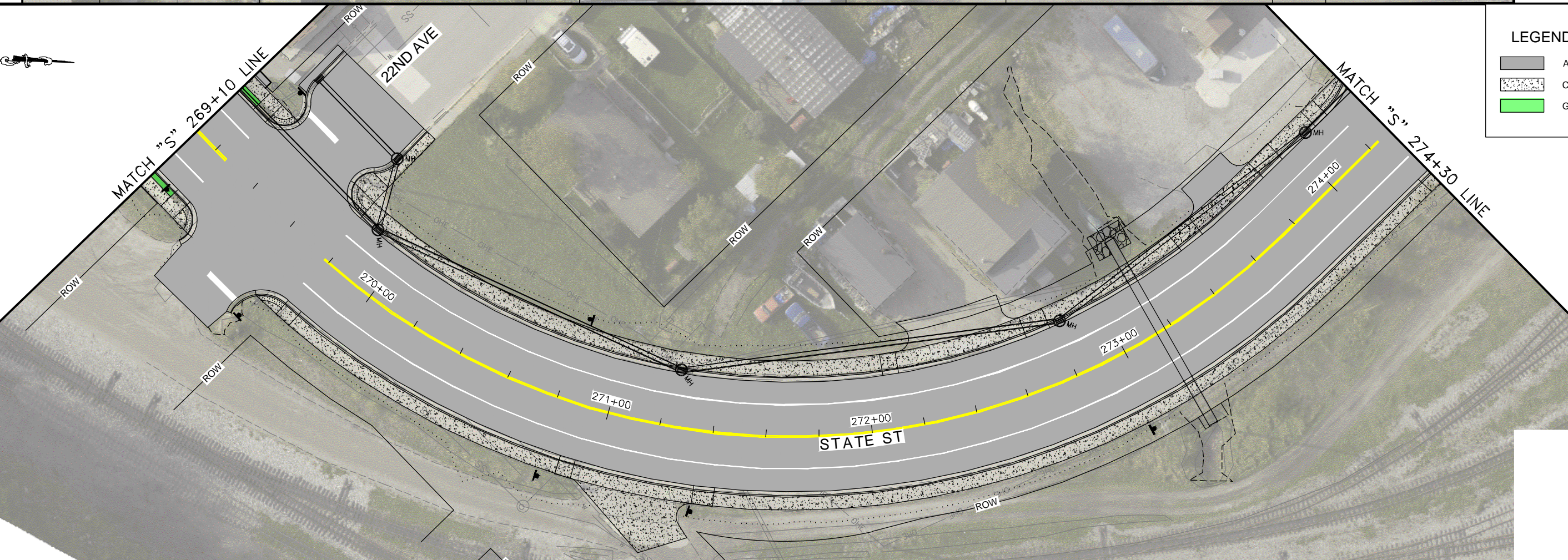
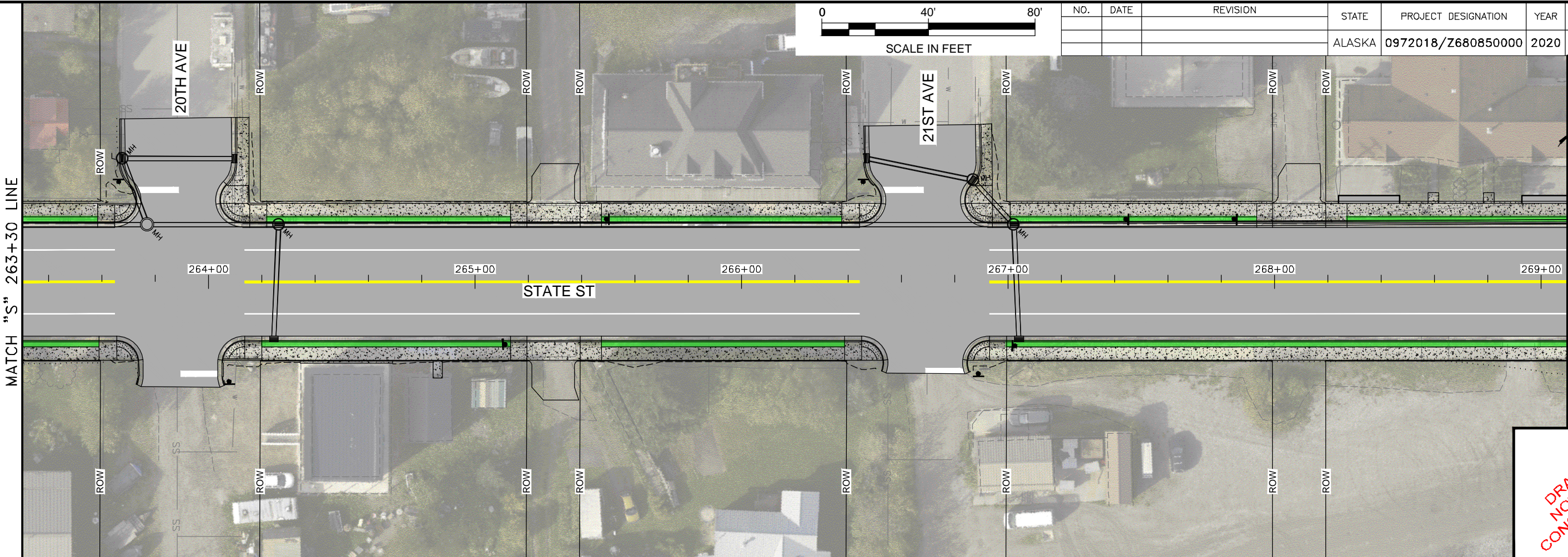
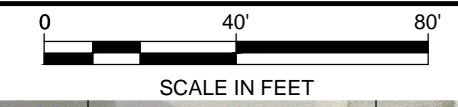
- ASPHALT
- CONCRETE
- GRASS BUFFER



FIRM: STATE OF ALASKA DEPARTMENT OF TRANSPORTATION & PUBLIC FACILITIES
 ADDRESS: 8860 GLACIER HWY., JUNEAU, AK 99811
 PHONE: (907) 465-1763
 CERTIFICATE OF AUTH #:

FILE: Z:\project\2608_01 DOT_SE Skagway State Street Rehab\Civil\Involvement Figures\6808\STATE\an-&Plate\2020\LAYOUT H6
 DESIGNED: JMH
 CHECKED: JLD
 DRAFTED: JMH

NO. DATE REVISION
 STATE PROJECT DESIGNATION YEAR SHEET NO. TOTAL SHEETS
 ALASKA 0972018/Z680850000 2020 6 7



**DRAFT-
NOT FOR
CONSTRUCTION**

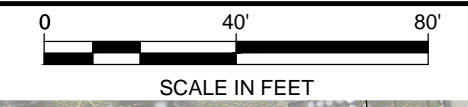
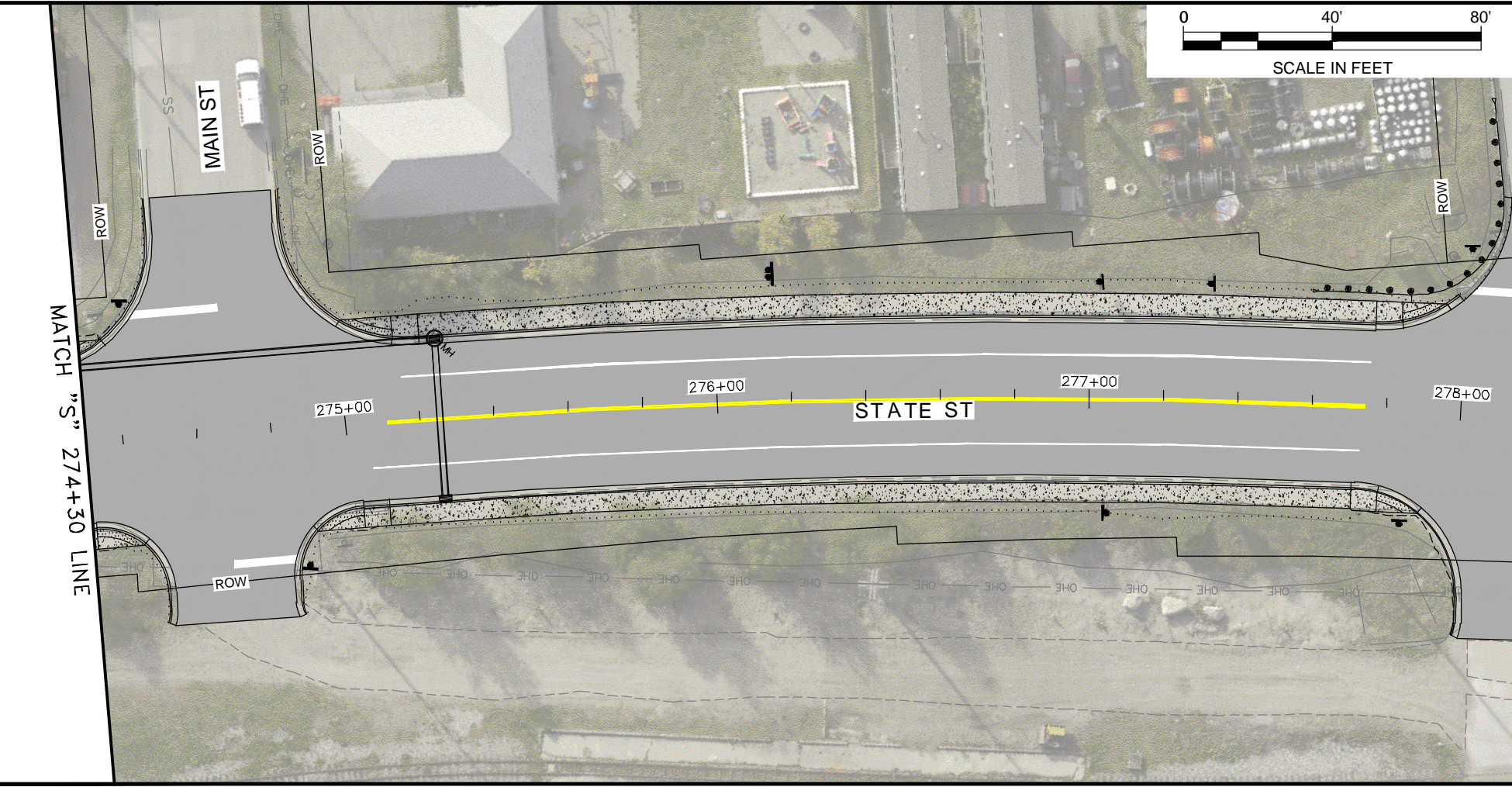
LEGEND

	ASPHALT
	CONCRETE
	GRASS BUFFER

FIRM STATE OF ALASKA DEPARTMENT OF TRANSPORTATION & PUBLIC FACILITIES
 FILE Z:\project\2608.01 DOT_SE Skagway State Street Rehab\Civil\ACAD\Civil\Involvement Figures\STATE\an-Plate\20

ADDRESS 8860 GLACIER HWY, JUNEAU, AK 99811
 PHONE (907) 465-1763
 DESIGNED JMH
 CHECKED JMD
 DRAFTED JMH

CERTIFICATE OF AUTH #:
 JLD



NO.	DATE	REVISION	STATE	PROJECT DESIGNATION	YEAR	SHEET NO.	TOTAL SHEETS
			ALASKA	0972018/Z680850000	2020	7	7

END OF PROJECT
 "S" LINE, STA 279+70
 END STRIPING
 MATCH EXISTING

**DRAFT-
 NOT FOR
 CONSTRUCTION**

LEGEND

	ASPHALT
	CONCRETE
	GRASS BUFFER